

# *Alchemy of the Heart*



## Uniting the Divine Feminine & Masculine Within

*With Brad Laughlin*

Weekend Intensives:  
June 27-30 · Marin County, CA  
July 11-14 · Portland, OR

### ***Imagine Living a Life Defined in Every Way by Love***

You can live that life, if you so choose, because right now a new paradigm of heart-centered consciousness is being birthed.

For eons humanity has been locked in a patriarchal paradigm where the *head* has governed the *heart*, the masculine has dominated the feminine, and fear has ruled over love. In this old paradigm the heart opens and closes at the whim of negative and positive stimuli, intensifying the existing imbalances already in place. These imbalances have resulted in a shutting down of the Great Heart and have brought our systems to the brink of collapse.

But the outmoded patriarchal structures are crumbling before our eyes and ushering in a time of unprecedented change and unparalleled challenge. Everywhere we look, we see fear, anger, despair and pain. However, we can choose a different experience. How we handle the global and personal crises mirrors our personal spiritual growth. Irrespective of the nature or extent of the particular predicament, we can always choose to respond with the qualities of the heart. Love, generosity, compassion and gratitude are powerful qualities that ignite the alchemical heart as we prepare to walk the path of love.

## ***Uniting the Divine Feminine and Masculine Within***

The suppressed power of the feminine is reawakening and tempering with the world's out-of-balance masculine energies to bring about a new paradigm.



Uniting the divine feminine and masculine within is like a sacred marriage where love can be produced from the wedding bed of the heart. When feminine and masculine support, nurture and collaborate with each other in balance and harmony, instead of competing or controlling, love is the result.

Because the outer world and all our relationships are mirrors of our own inner reality, we can

change our outer reality through changing ourselves. Therefore, the greatest gift we can give each other and Mother Earth is our own balanced, whole and awakened Self.

We are at the turning of a Great Age, and it is time, right now, for our hearts to be reopened so that we may regain wholeness and live in love.

### ***Love in Action***

Loving is more than just an intellectual knowing. So much of love's power lies in the doing. Alchemy of the heart is, therefore, very much about love in action, and this intensive will show you how.

*At this pivotal moment in human evolution we are being invited to:*

- **Clear our consciousness to manifest the loving world we most desire**
- **Balance the divine feminine and masculine within us**
- **Maintain an open heart irrespective of external challenges**
- **Live in eternal love**
- **Put our love into action**
- **Serve the Earth and all her sentient children with an open, loving heart.**

Learn to recognize what truly serves love. Acquire the skills to keep the heart open regardless of external provocations. Practice integrating the divine feminine and masculine in such a manner that they support each other in the service of love.

***Unite your divine feminine and masculine within  
And step fully into your power to love!***

## **What You Will Receive from the Intensive**

*A deeper understanding of:*

- **The eternal dance of feminine and masculine energies**
- **How to integrate the *other* in a loving, enduring and constructive manner**
- **How your relationships mirror your inner reality**
- **How to generate harmony and balance within every aspect of your life**
- **How to live permanently in love**
- **How to put your love into action.**

*Personal practices and practical tools that:*

- **Facilitate the integration of the energies we long to reawaken**
- **Seed the practice of love in action**
- **Ground the spiritual principles**
- **Assist you to embody love, peace and balance, every day and in every way.**

*The intensive will include:*

- **Q&A sessions with Brad**
- **Guided meditations**
- **An energetic transmission to assist with the alchemical process of uniting the divine feminine and masculine, both within us and within the world, as we open the heart permanently.**

***Join me as we rekindle, reactivate and reawaken our hearts.  
Together we will transform our world!***



## About Brad

A spiritual teacher for over 20 years, **Brad Laughlin** has offered innovative ways of helping people transform consciousness and awaken during these times of great change—in particular how to keep the heart open in the face of adversity. At his events he shares a transmission of love, joy and healing energy that is uplifting and enduring. He is the author of the upcoming book, *Living with Enlightenment—A Journey of Love*, about his 27-year life-partnership with teacher of enlightenment, **Leslie Temple-Thurston**, and of other **books**, which offer tools, guidance and inspiration for spiritual transformation through the teachings of non-duality. Brad is the Executive Director of the international non-profit organization, **CoreLight**, which is dedicated to fostering outer peace through developing personal inner peace. He facilitates journeys to sacred sites worldwide and is a co-founder of **Seeds of Light**, CoreLight's humanitarian arm, serving marginalized communities and AIDS orphans in South Africa. He has a B.S. degree from Duke University and when not with his spouse, Leslie, in South Africa, is traveling and offering events in other parts of the world.



## Weekend Intensives

**JUNE 27-30, 2019**

**EarthRise Retreat Center at the Institute of Noetic Sciences (IONS)**

**Petaluma, California ' A 4-Day Intensive ' Thursday evening – Sunday midday**

### About IONS EarthRise Retreat Center

Institute of Noetic Sciences **EarthRise Campus** is nestled in the oak groves and rolling hills of beautiful northern California. Extraordinary in its beauty, IONS EarthRise Campus reverberates with the energy of the land and the wisdom of those who've inhabited it for centuries. Pairing modern amenities with picturesque surroundings, our experiential retreat center offers an ideal space to teach, learn and grow. Walk the labyrinth, meet in the oak grove, and let the serenity of the landscape enhance your experience. Once you feel the power of EarthRise, you'll know why guests return time and again.



## Early-Bird Special Price Until May 9

The recommended tuition is \$499 for this four-day intensive, which includes all meals. However, until May 9, we can offer a sliding-scale tuition starting at \$429 for those who need it. After May 9, the minimum tuition is \$499. If you can afford to give more in support of CoreLight's work for the world, please do. We thank you for your generosity.

### Meals

The four-day intensive includes all meals, beginning with dinner on Thursday June 27 and ending with lunch on Sunday June 30.

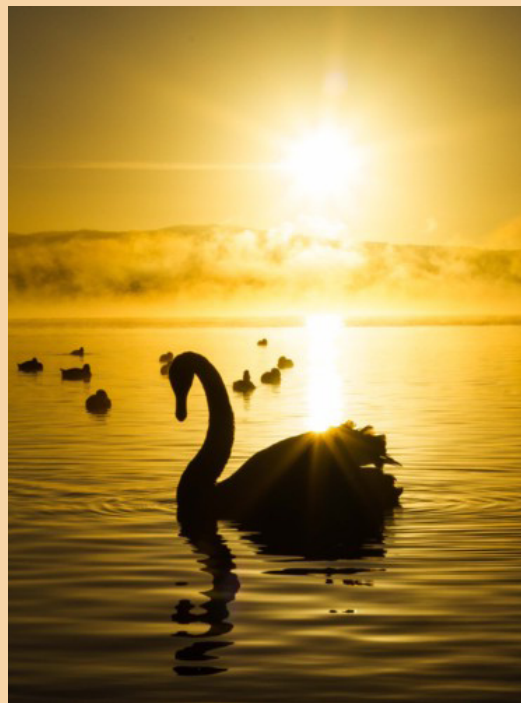
### Accommodation

The intensive does not include accommodation. Participants are required to make their own reservations for local accommodation. Here is a short list of local places to stay, and we also recommend [Airbnb](#) with zip code 94952:

- [Sheraton Sonoma County](#)
- [Hotel Petaluma](#)
- [Metro Hotel & Cafe](#)
- [Days Inn by Wyndham - Novato](#)
- [Novato Oaks Inn](#)
- [Best Western Petaluma Inn](#)
- [Hampton Inn Petaluma](#)

### Schedule

Our first gathering will be Thursday evening after dinner. On Friday and Saturday we will have two sessions, morning and afternoon, and close the day with dinner. On Sunday we will have our closing session in the morning, and end with lunch. Upon registration, we will send you a full intensive schedule and other information.



## REGISTRATION DEADLINE JUNE 17

To register, please do one of the following no later than June 17:

£ If your credit card is not on file with CoreLight, phone Dhari, give her your credit card information and tell her the amount you want debited: (505) 424-8844.

£ If your credit card information is on file with CoreLight, email Dhari and tell her the amount you want debited: [dhari@corelight.org](mailto:dhari@corelight.org).

£ If you are paying by check, email Dhari to confirm your attendance at [dhari@corelight.org](mailto:dhari@corelight.org) and send a check (US only) to: CoreLight, 223 North Guadalupe Street #275, Santa Fe, NM 87501.



## **JULY 11-14, 2019 ' Unity Church of Portland, OR**

**FREE INTRODUCTORY SESSION ' Thursday July 11, 6:30-8:30pm**

**3-DAY INTENSIVE ' Fri July 12th, 6:30-8:30pm ' Sat 13th, 9am-5pm ' Sun 14th, 2-5pm**

### ***Early-Bird Special Price Until May 9***

If you register by May 9, the early-bird special tuition for the three-day intensive is \$299. Thereafter, the regular tuition of \$379 applies.

### ***Free Thursday Night***

For those who may be new to CoreLight or who are unable to attend the entire weekend intensive, we offer the Thursday evening session as our gift to you. All are welcome.

### ***Logistics***

Food and accommodation are not included. There will be a 90-minute lunch break on Saturday.

## **REGISTRATION**

### **To register, please do one of the following:**

£ If your credit card is not on file with CoreLight, phone Dhari, give her your credit card info and tell her the amount you want debited (\$299 until May 9, or \$379 thereafter): (505) 424-8844.

£ If your credit card information is on file with CoreLight, email Dhari and tell her the amount you want debited: dhari@corelight.org.

£ If you are paying by check, email Dhari to confirm your attendance at dhari@corelight.org and send a check (US only) to: CoreLight, 223 North Guadalupe Street #275, Santa Fe, NM 87501.

£ Show up at the door and pay the regular tuition of \$379 by cash, credit card or check.